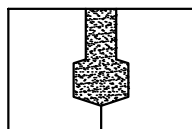
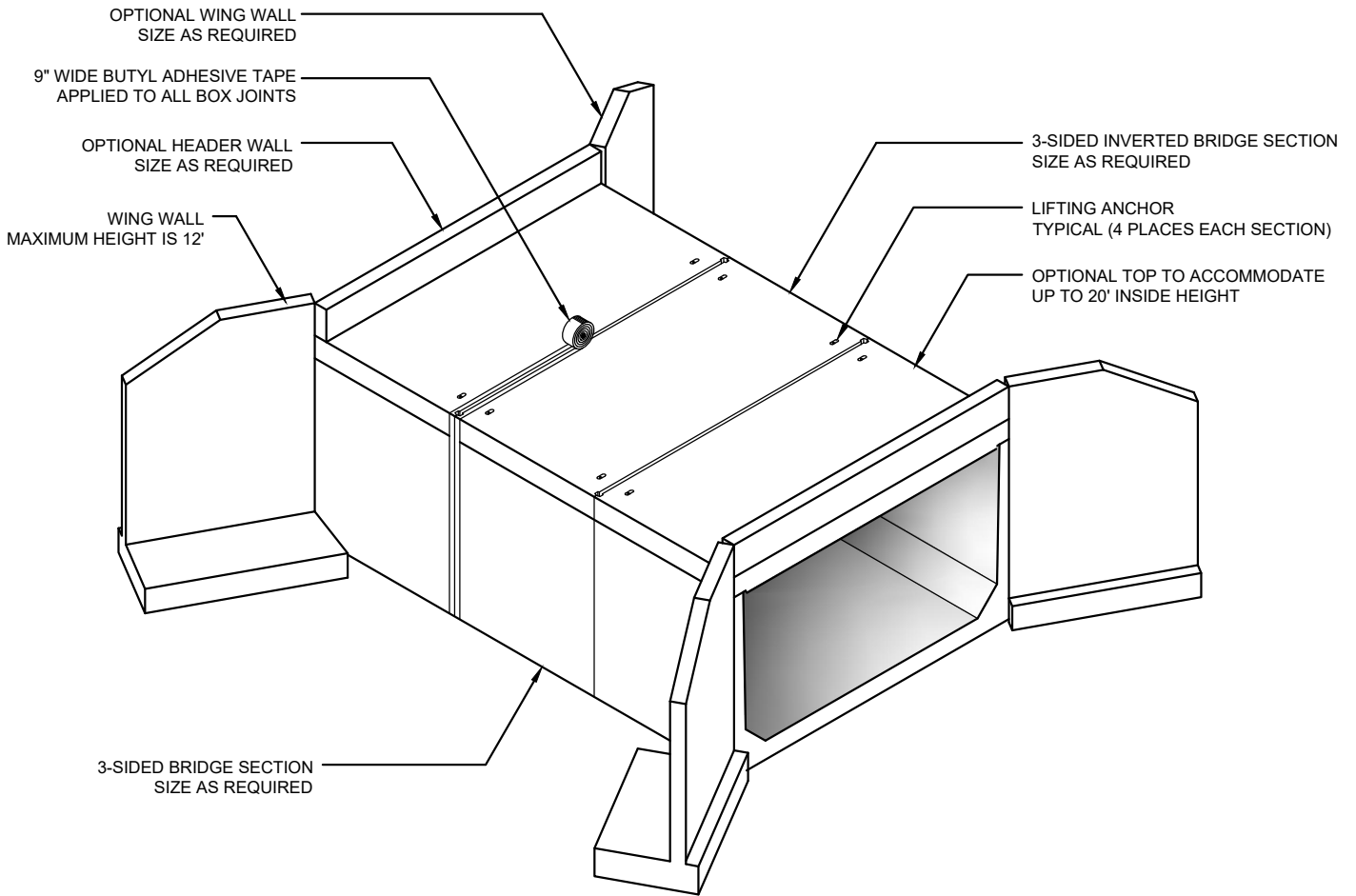
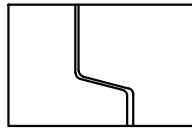


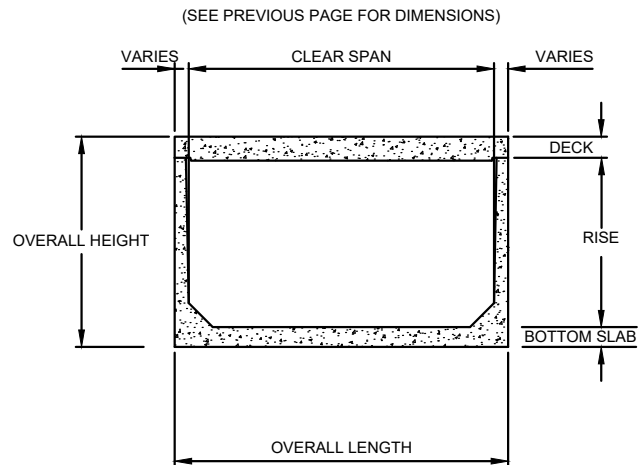
SPLIT BOX CULVERT



GROUT JOINT



SHIPLAP JOINT



SECTION VIEW

NOTES:

1. FOOTING JOINTS TO BE STAGGERED IN RELATION TO BRIDGE JOINTS.
2. USE NON-SHRINK GROUT CONFORMING TO ASTM C1107.
3. EACH BRIDGE JOINT SHALL BE WRAPPED WITH 9" WIDE BUTYL ADHESIVE TAPE.
4. LOADS ARE NOT TRANSFERRED ACROSS SHIPLAP JOINT. LOAD TRANSFER REQUIRES GROUT KEY.