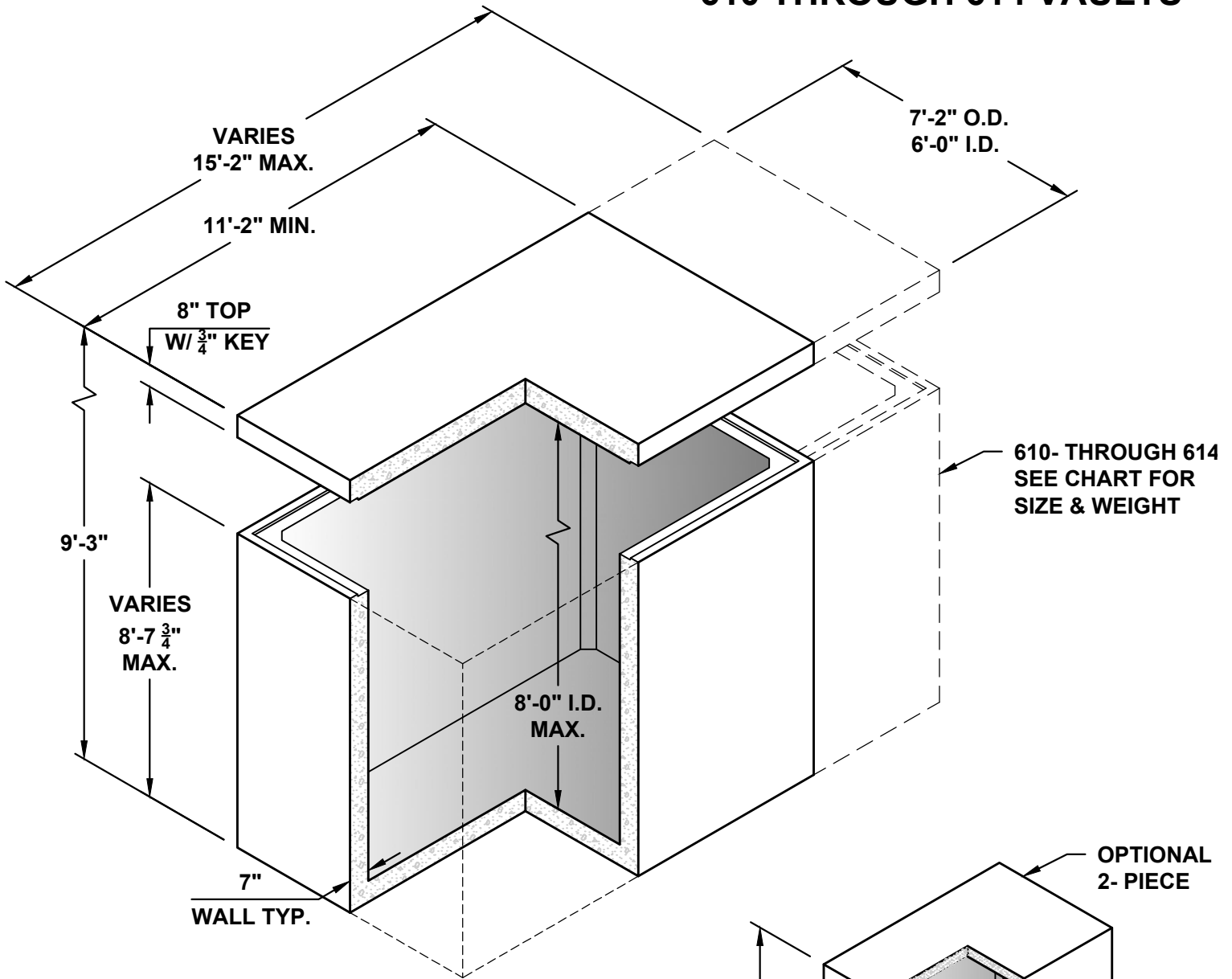


610 THROUGH 614 VAULTS



| 610 THROUGH 614 IN 2FT. INCREMENTS | | | | | |
|------------------------------------|------------|-------------|-------------|------------|-------------|
| VAULT | WIDTH I.D. | LENGTH I.D. | HEIGHT I.D. | TOP WEIGHT | BASE WEIGHT |
| 610 | 6'-0" | 10'-0" | 8'-0" | 7,920 LBS | 31,270 LBS |
| 612 | 6'-0" | 12'-0" | 8'-0" | 9,340 LBS | 35,320 LBS |
| 614 | 6'-0" | 14'-0" | 8'-0" | 10,750 LBS | 39,380 LBS |

NOTE:
WEIGHTS BASED ON 7"
FLOOR AND 8" TOP SLAB

NOTE:
HEIGHT OF BASE AND TOP ADJUSTABLE, 8'-0" I.D. MAX EACH SECTION, BASE FLOOR AND TOP DECK THICKNESS AS REQUIRED.
OPTIONAL TOP ACCESS, MANHOLE FRAME & COVERS, AND HATCHES AS NEEDED.
VARIOUS SIZES AVAILABLE.
OPTIONAL ACCESSORIES: STRUT CHANNEL, SUMPS, INSERTS, LADDERS, ETC.

