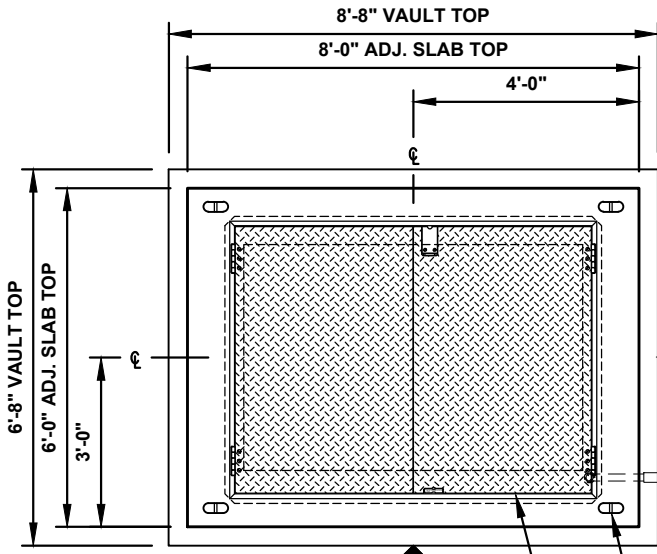
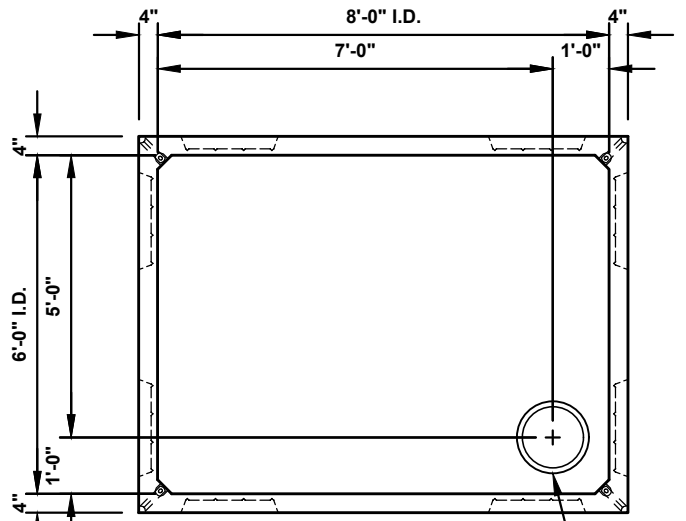


TVWD - 687 DCV/DCDV VAULT



PLAN VIEW - TOP

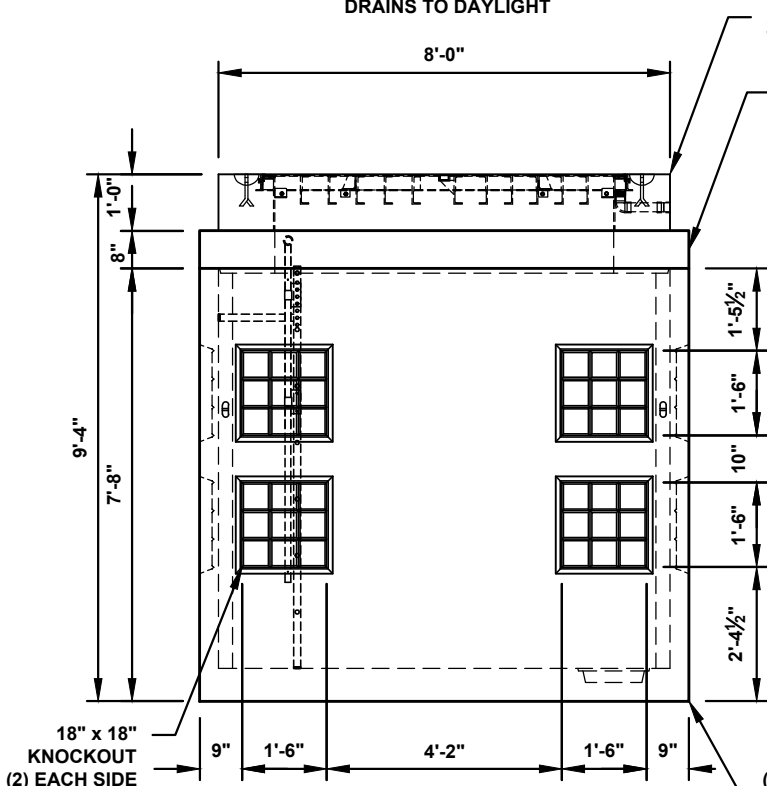
48" x 72" ALUMINUM HATCH
DRAINS TO DAYLIGHT



PLAN VIEW - BASE

4 TON LIFT ANCHOR
(4) EACH, TOPS & BASE

Ø12" SUMP

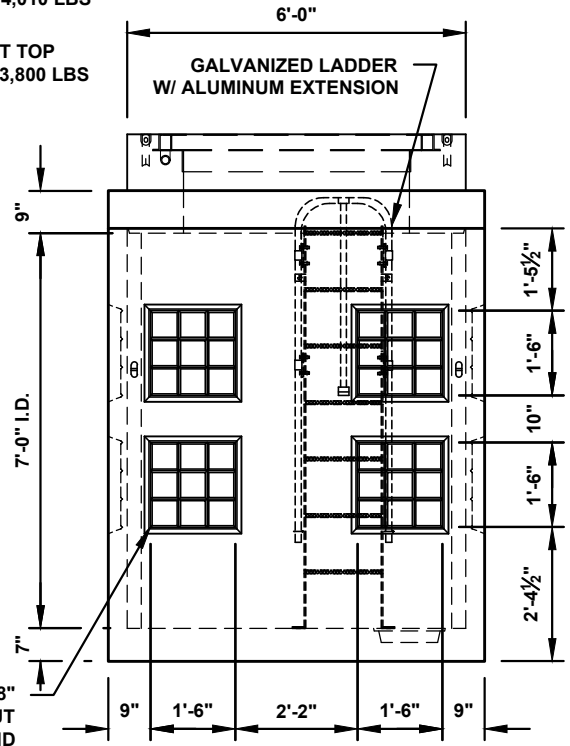


VIEW - A

ADJUSTABLE TOP W/ HATCH
WEIGHT: 4,010 LBS

680 VAULT TOP
WEIGHT: 3,800 LBS

GALVANIZED LADDER
W/ ALUMINUM EXTENSION



VIEW - B

18" x 18"
KNOCKOUT
(2) EACH END
687 VAULT BASE
WEIGHT: 15,150 LBS

NOTES:

1. INTERNAL PLUMBING/HARDWARE PROVIDED AND INSTALLED BY OTHERS.
2. REFER TO MANUFACTURERS DRAWING(S) FOR HATCH DETAILS.
3. CRYSTALSEAL COATING APPLIED TO EXTERIOR SURFACES.
4. WEIGHTS LISTED ARE APPROXIMATE.