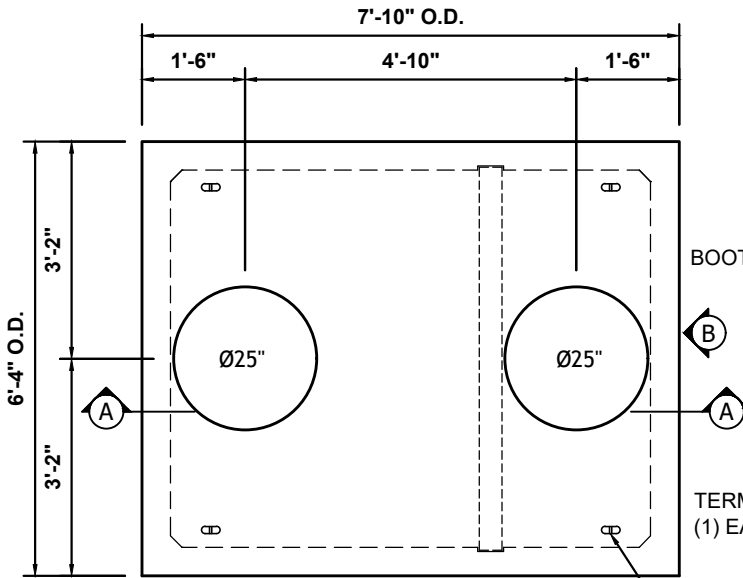
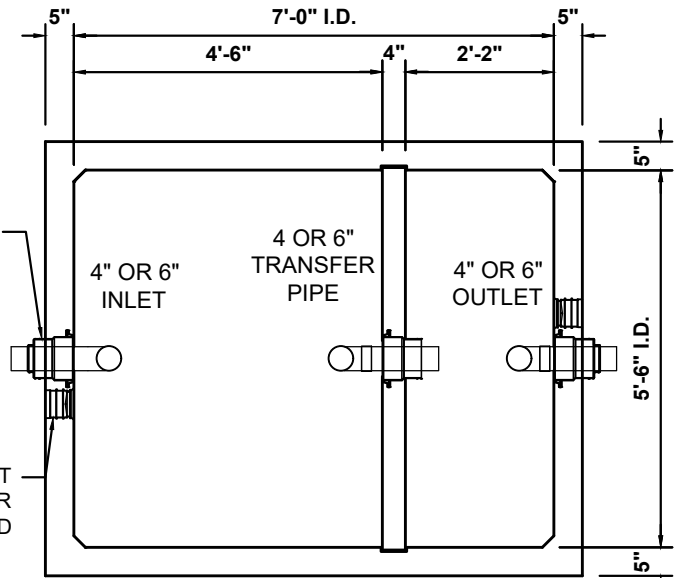


# 1000 GALLON GREASE INTERCEPTOR (675)



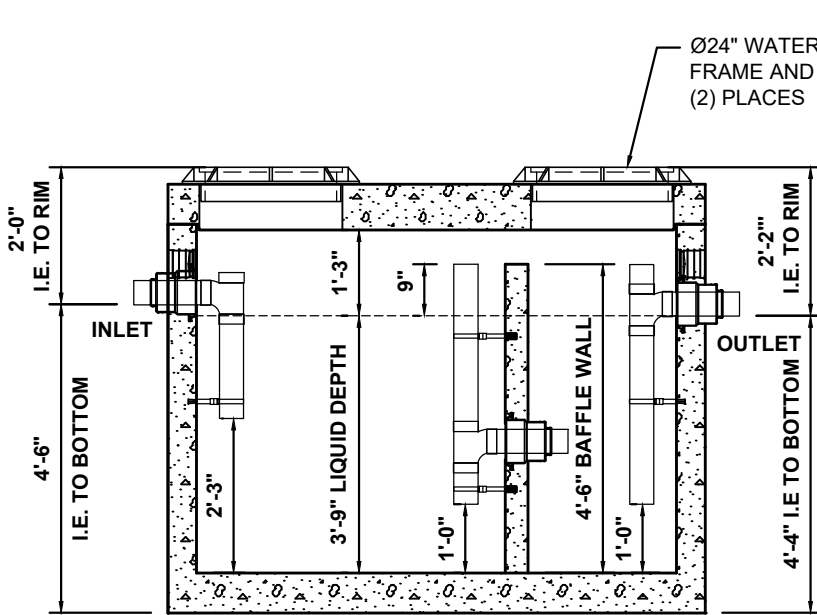
**PLAN VIEW - TOP**

CASTING AND GRADE RINGS  
NOT SHOWN FOR CLARITY

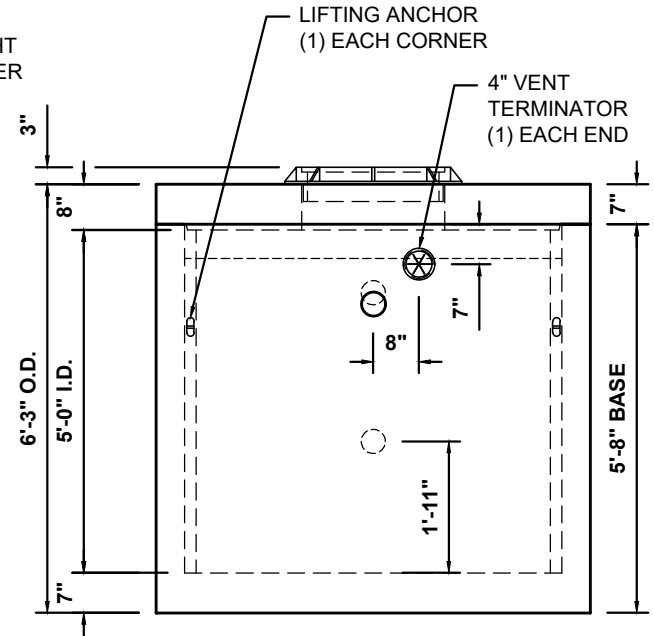


**PLAN VIEW - BASE**

LIFTING ANCHOR  
(4) PLACES



**SECTION A-A**



**VIEW-B**

PIPE AND FITTINGS  
NOT SHOWN FOR  
CLARITY

**NOTES:**

- Maximum DFU's = 35 for 1,000 gallon size Interceptor.
- Heaviest pick weight = approx. 14,075lbs.
- Vault meets or exceeds ASTM-C1613 & IAPMO/ANSI Z1001.
- H20 Traffic Rated.
- Fill completely with clean water prior to start-up of system.
- Gray water only.
- Ventilate Interceptor before servicing.
- It is the responsibility of the owner to service this unit.
- Interior plumbing included.
- Grade rings available as needed.



**"IAPMO Listed"**